

A watercolor illustration of the Earth, showing blue oceans, green continents, and white clouds, set against a textured, greyish background.

NEEDS AND CHALLENGES FOR DEVELOPING BAT IN INDIA

**CHIRAG BHIMANI
INDIA**

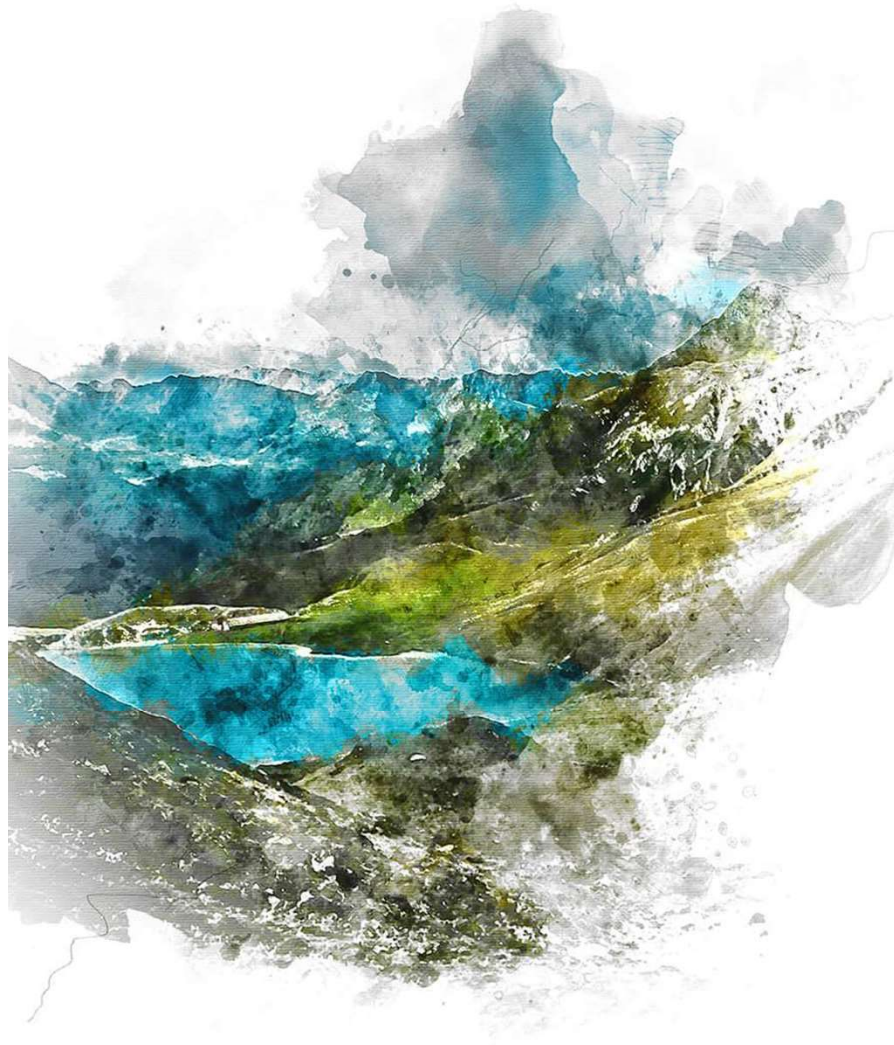
A watercolor-style illustration of solar panels. The panels are blue with white grid lines, set against a background of blue and white watercolor clouds. The panels are arranged in a row, with the largest one in the foreground and smaller ones receding into the distance. The overall style is artistic and soft.

Agenda

The Need and Why BREF??

Methodology Adopted

First Results & Challenges Faced



1.

*The Need & Why
BREF??*

THE NEED

India doesn't operate with a BAT concept like that of European Union

Several rules, notifications and guidelines for the control and prevention of industrial pollution exists

This includes legally binding emission standards or discharge limit values specific to each industrial sector

Industrial facilities must comply in order to obtain permission from the State Pollution Control Boards

The industry-specific emission standards or discharge limits are called Minimal National Standards (MINAS)

MINAS

MINAS, by definition, are techno-economical norms achievable by the industry

They constitute quantitative limit values for the emission of pollutants into the environment

These include air pollutants emitted from stacks, fugitive emissions and water pollutants in wastewater

Techniques for prevention and control of chemical pollution from industries are considered as part of the development of the MINAS

MINAS

These are Best Techno-Economically Available Techniques (BTEAT) rather than BAT

Exchange of information during the process between all stakeholders is absent and missing

No improvement of competence in the applied industrial processes in the authorities

Does not consider cross-media effect and provides end of the pipe treatment options and solutions

WHY BREF??

All the key stakeholders like industrial units, experts from industries etc. are included in the process leading to successful implementation

Meetings are held to draw important conclusions from the group giving a meaningful input to BREF

Sector Specific and Product Specific standards are possible using BAT

Addresses applicability issue and cross-media effects

Focusses more on process integrated prevention of pollution instead of end of pipe treatment



2.
*Methodology
Adopted*

GUJARAT'S APPROACH FOR BREF

Gujarat : One of the most industrialized states of India

Comparatively Larger Industrial Estates

Increasing Environmental Issues

Indian Environmental Standards different from European Standards

Hence - need of BREF customised for Gujarat

BREF Document to be prepared in the context of Gujarat Industrial Scenario

Textile sector - first sector for BREF in Gujarat

ORGANISATIONS INVOLVED

*German Federal
Environment
Agency (UBA)*

*Gujarat Pollution
Control Board
(GPCB)*

*Deutsche Gesellschaft
für Internationale
Zusammenarbeit
(GIZ)*

*Gujarat Cleaner
Production Centre
(GCPC)*

*Textile Industries
of Gujarat*

*Textile Industries
Associations*

*Sector specific
experts*

*Environment
related Non –
Government
Organizations*

*Academic
Institutes*

*Textile Machinery,
Dyes, Chemical &
Auxiliary
Manufacturer*

METHODOLOGY



A watercolor illustration of a mountain landscape. The scene features a prominent mountain peak in the background, rendered in shades of blue and grey. In the foreground, a vibrant blue lake is nestled in a valley, surrounded by green and yellowish-brown slopes. A path or road winds through the landscape, leading towards the mountains. The overall style is soft and artistic, with visible brushstrokes and a blend of colors.

3.

*First Results &
Challenges Faced*

FIRST RESULTS

- *Preparation of Guidance document for drawing up of BREF documents*
- *Questionnaires for data collection for BAT*
- *Identification of the key environmental issues for the Textile sector*
- *Primary identification of the best environmental performance levels, on the basis of the available data in the European Union and world-wide*
- *Examination of the conditions under which these performance levels were achieved*
- *Such as costs, cross-media effects, main driving forces involved in implementation of the techniques*

CHALLENGES

New Process and Procedure

New Concept - No previous precedence

Industries never involved in policy making earlier

Data Collection, its accuracy and authenticity

Lack of knowledge - could not share details

Data Compilation and addressing the data gaps

Convincing and explaining the stakeholders - first of its kind effort in India

Industries unsupportive due to novel idea and never before implemented

A collage featuring several blue solar panels arranged in a grid pattern, set against a background of vibrant blue and white watercolor splashes. The panels are tilted and appear to be part of a larger solar farm or installation. The watercolor effect is soft and artistic, blending into the white background.

Thanks!

chirag@bhimani.in

+91-9825830535

+91-9879652844